



42 Snowberry Walk

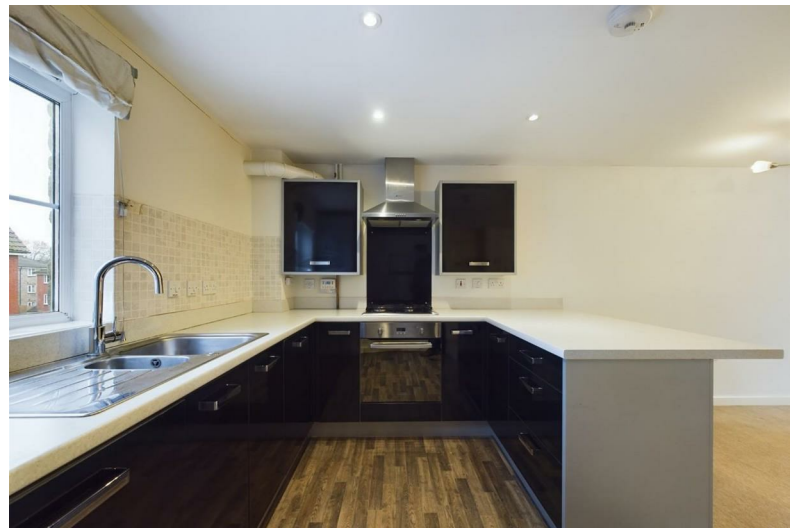
St George, Bristol, BS5 7DG

**Asking price £230,000**





# 42 Snowberry Walk



## Description

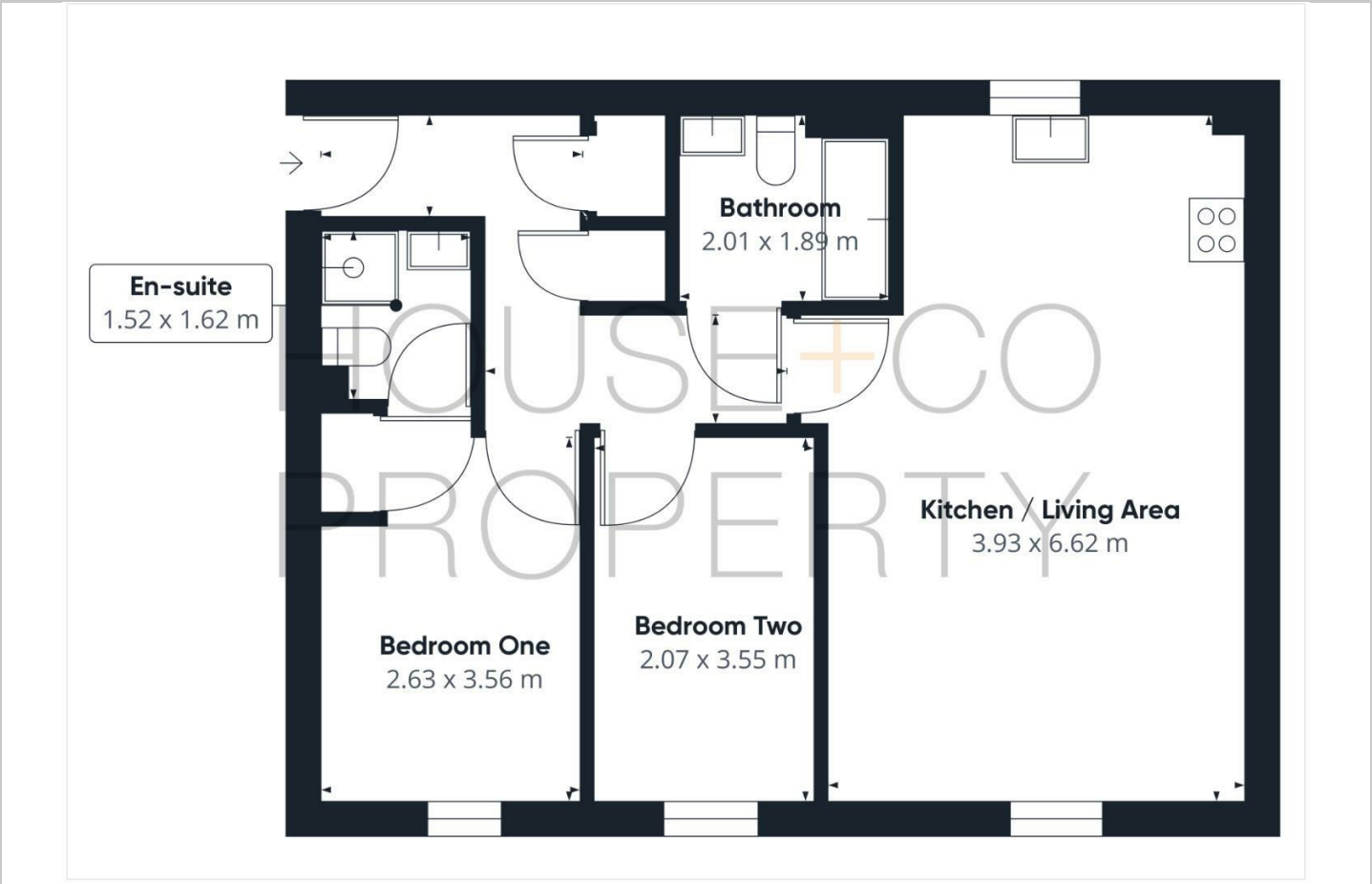
Beautifully presented modern two bedroom top floor apartment set in this popular development next to St George's Park. Offering modern living with great access to commuter routes makes this lovely home an ideal first time buy. The property comprises of communal entrance, hallway with storage cupboards, spacious and bright open plan living/dining with modern fitted kitchen with built in appliances and breakfast bar. There are two double bedrooms, a family bathroom and further ensuite shower room. Further benefits include gas central heating, double glazing, allocated parking bay and communal bicycle store and well maintained gardens. We are advised that the property benefits from a 994 year lease, an annual ground rent charge of £221.80 and an annual service charge of approx £1782.97. Council Tax Band B.

- MODERN APARTMENT
- TWO DOUBLE BEDROOMS
- MODERN KITCHEN
- ENSUITE TO MASTER
- LOVELY VIEWS
- NEXT TO ST. GEORGES PARK
- OPEN PLAN LIVING
- BATHROOM
- ALLOCATED PARKING

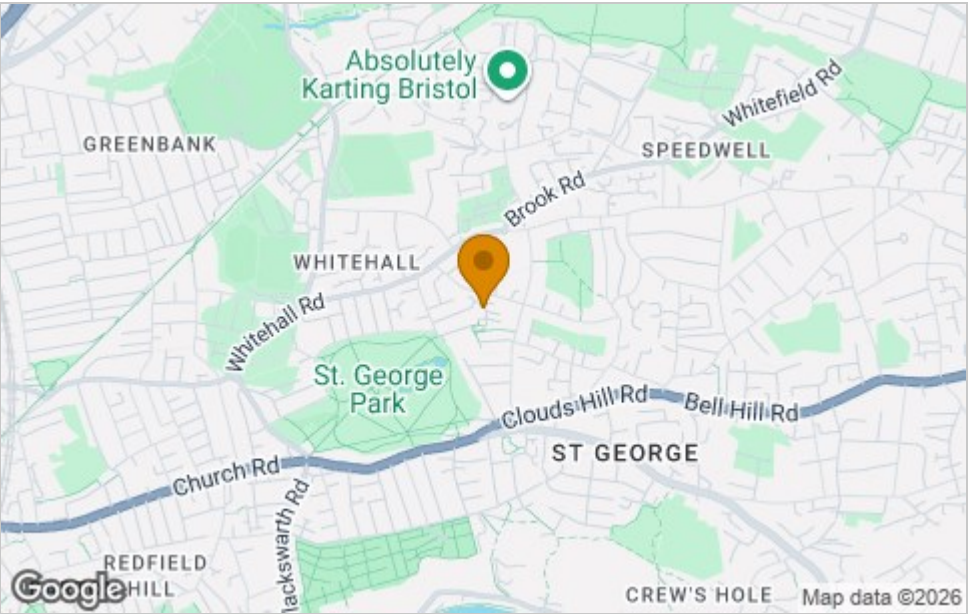




Floor Plan



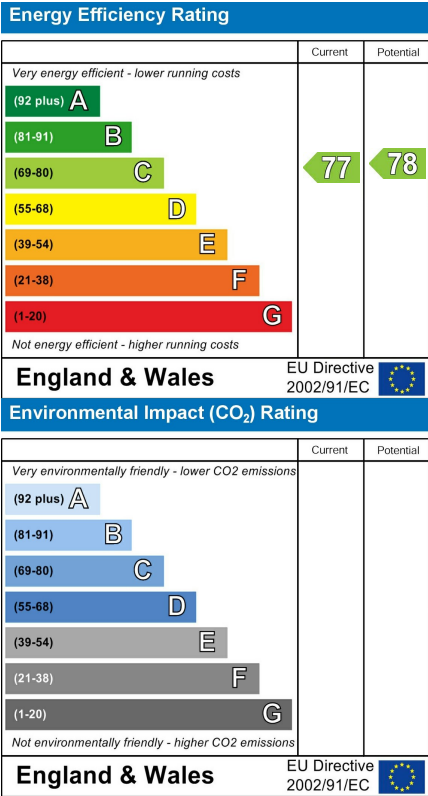
Area Map



Viewing

Please contact our House + Co Property (Sales) Office on 0117 907 0020 if you wish to arrange a viewing appointment for this property or require further information.

Energy Efficiency Graph



These particulars, whilst believed to be accurate are set out as a general outline only for guidance and do not constitute any part of an offer or contract. Intending purchasers should not rely on them as statements of representation of fact, but must satisfy themselves by inspection or otherwise as to their accuracy. No person in this firm's employment has the authority to make or give any representation or warranty in respect of the property.